

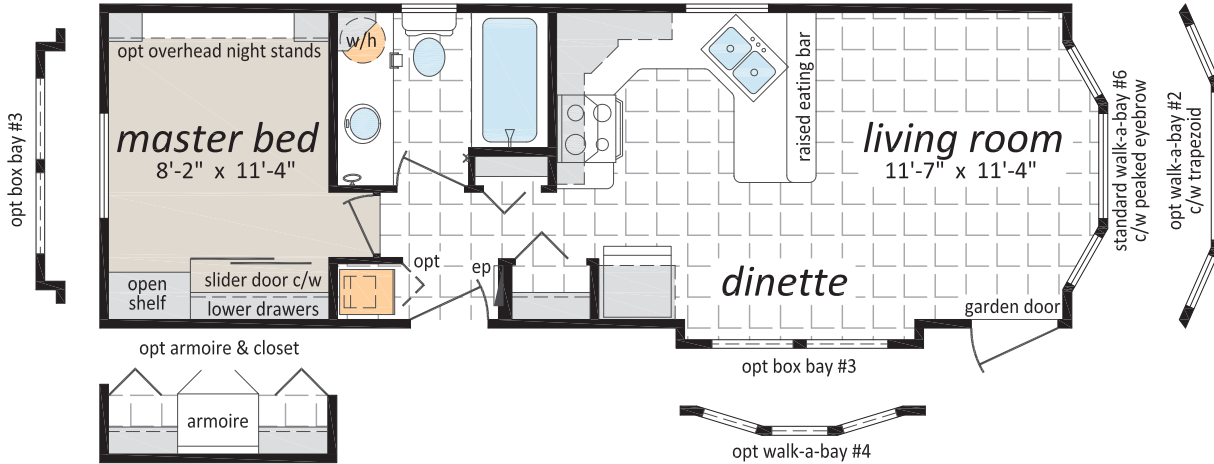


The Resort Series

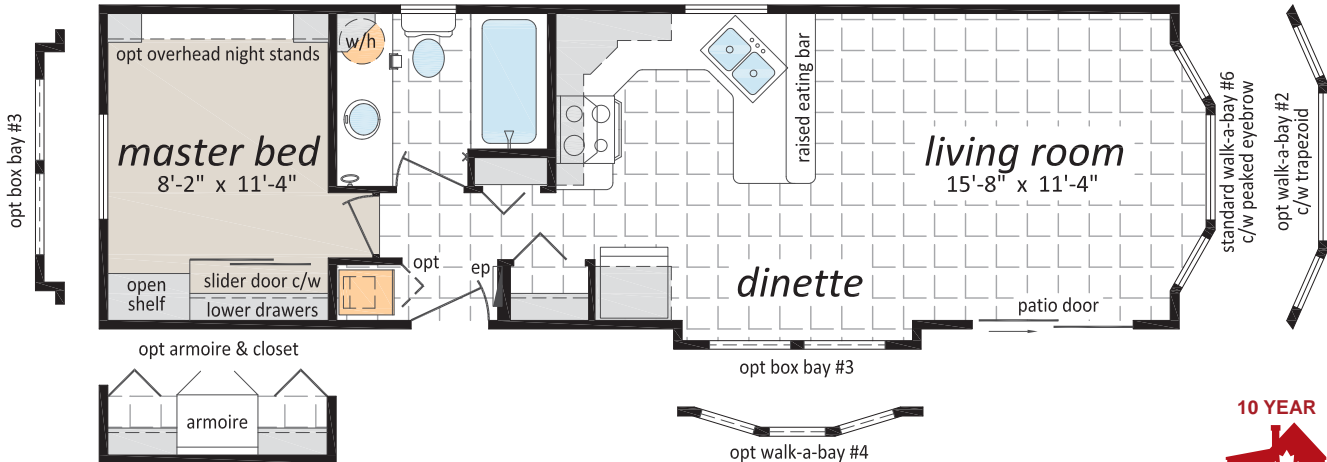
Park Model Homes



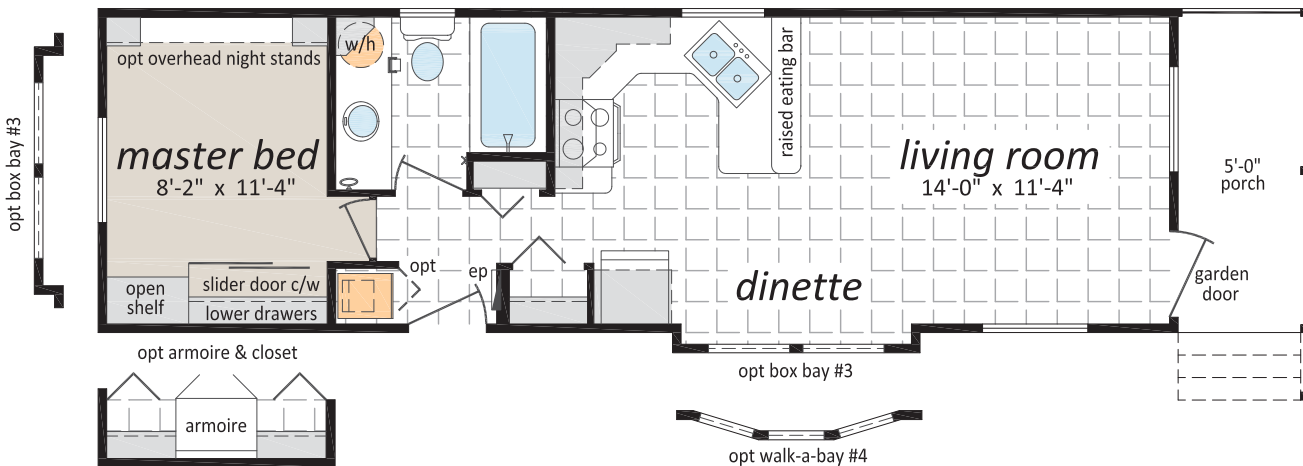
PM-1236, 12' x 36'



PM-1240-A, 12' x 40'

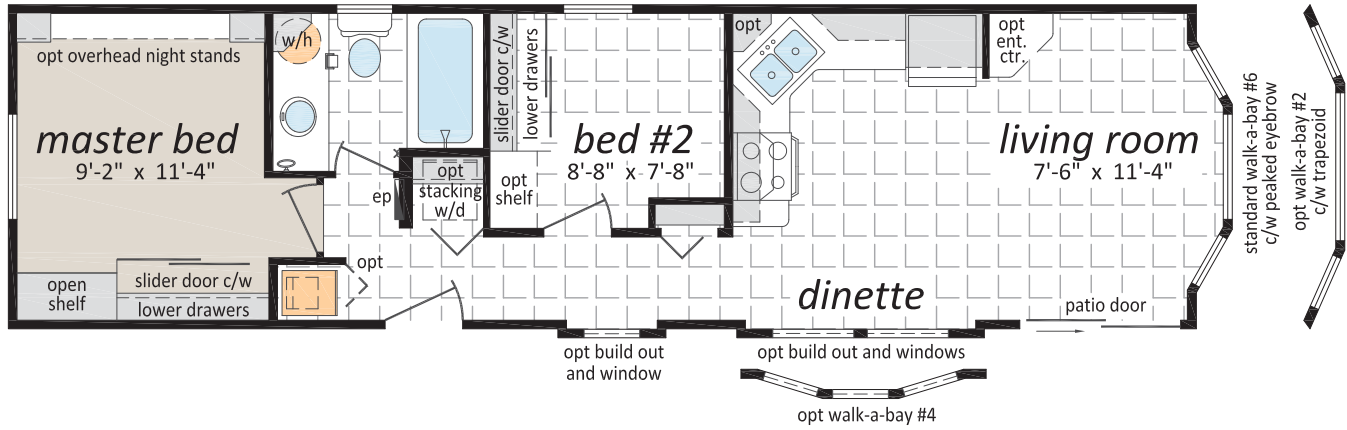


PM-1240-B, 12' x 40' (plus porch)

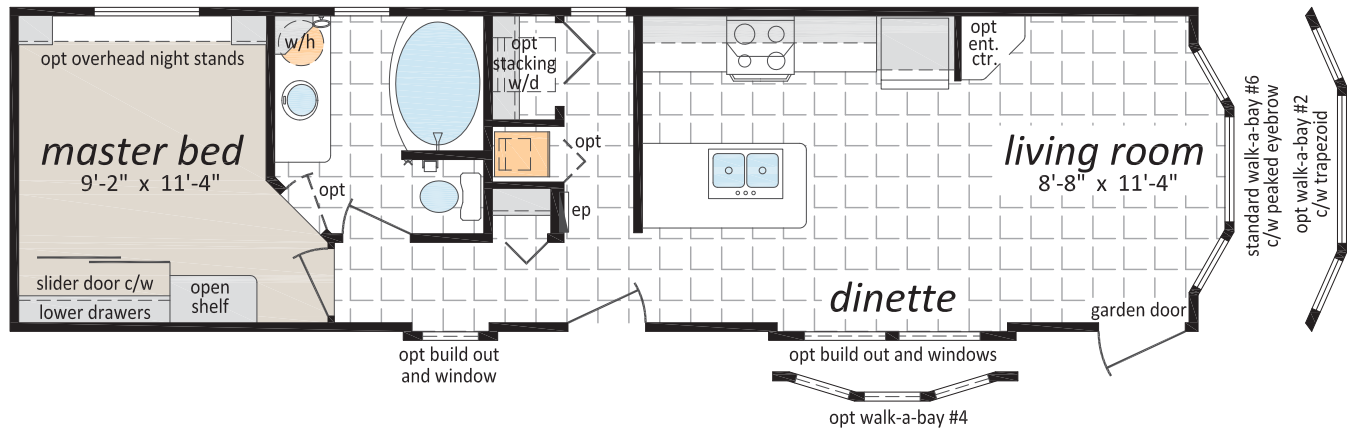


The Resort Series

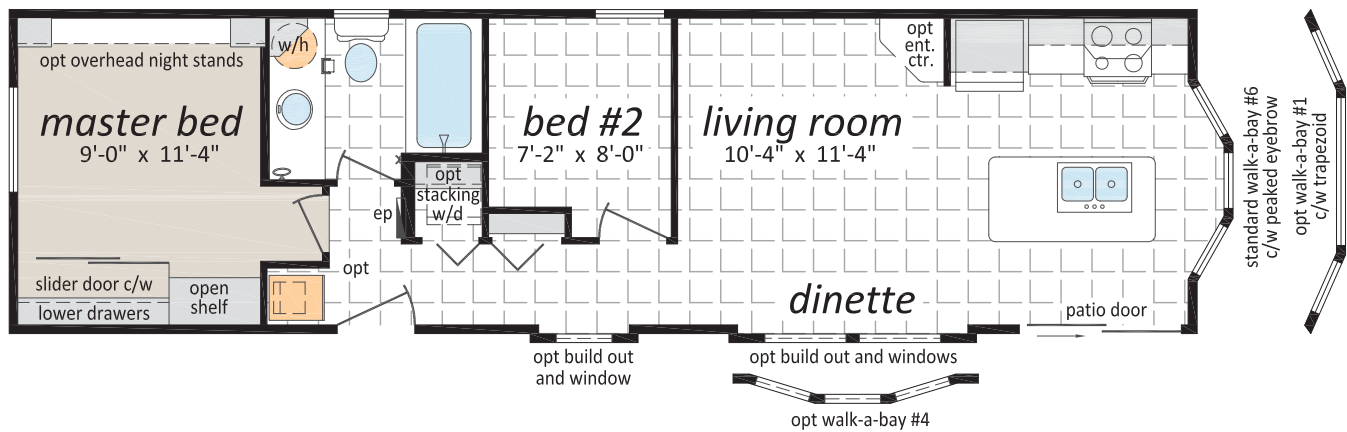
PM-1244-A, 12' x 44'



PM-1244-B, 12' x 44'



PM-1244-C, 12' x 44'



Note: Some eave side bays may require optional 3rd gable and eyebrow.

Standards and Specifications

Exteriors

- Maintenance Free Vinyl Siding
- Vinyl Trim on all Windows & Doors
- Fibreglass Shingles
- Nominal 7/12 Roof, 5/12 Interior Ceiling
- 12" Fixed Eave Overhang
- 2x4 Exterior Walls @ 24" o.c.
- 7' 6" Sidewall
- Black or White Coach Lights at all Exterior Doors
- 6-Panel Insulated Exterior Rear Door
- Energy Efficient Patio or Garden Door at Front Entry
- Front Walk-a-bay c/w Peaked Eyebrow (*Applicable Models*)
- Low E & Argon Gas Thermal Pane PVC Windows with Screens and Security Latches
- 2x6 Floor Joists @ 16" o.c.
- 19/32" Floor Decking - Screwed and Glued
- Weatherproof Outside GFI Receptacle
- Frost Free Exterior Tap
- Heat Tape Receptacle at Water Heater
- Insulation: Ceiling R-20, Walls R-12, Floors R-20
- Box Steel Frame with Detachable Hitch

Interiors

- Cathedral Ceiling Throughout
- Textured Ceilings
- Carpet in Master Bedroom
- Linoleum Elsewhere
- Flat-Panel White Interior Doors
- Craftsman Square-edge White Interior Trim
- Decora Receptacles & Switches
- Pewter Light & Hardware Package
- Designer Selected Drapery w/ Venetian Blinds Through-Out

Kitchen

- 18 Cu. Ft. Refrigerator
- 30" Self Clean Gas Range
- Rangehood /w Two Speeds & Light
- Stainless Steel Kitchen Sink
- Brushed-Nickle Single-Lever Faucet
- PVC Modular Cabinets
- Upper Cabinet /w Frosted Glass Accent (*Applicable Models*)
- Deep Fridge Cabinet
- Pantry Closet (*Applicable Models*)
- Bank of Drawers
- Tile Backsplash

Bathroom

- One Piece Tub and Shower w/ Brushed-Nickel Single-Lever Faucet
- Dual Lever Vanity Faucets
- 3 Light Fixture over Vanity
- Towel Ring and Robe Hooks
- Bathroom Window
- Corner Medicine Cabinet
- Banjo Vanity (*Applicable Models*)
- Exhaust Fan in Bathroom
- G.F.I. Protected Receptacle
- Tile Backsplash
- Privacy Lock

Utilities

- 30 Gallon Electric Water Heater
- Gas Furnace with Auto Ignition
- Propane Line Front and Rear with Regulator
- 50 Amp Electrical Service with 25' Cord
- Two Phone/Cable Boxes
- Smoke Detectors as per code
- Fire Extinguisher
- Built to CSA Z-241 Standard

Popular Optional Features

Exteriors

- Sequoia Vinyl Siding
- Hardie Plank Siding
- Faux Rock Accents
- Exterior Third Gables
- Shed Dormers
- Smart Start Exterior Fascia, Window and Door Trim
- Bay Windows and Build-out Windows
- Trapezoid Windows above Front Bay
- Skylights
- Painted Smart Start Shutters
- 9 Lite Exterior Door
- Garden and Patio Doors
- Door Chimes

Interiors

- Painted Drywall w/ Rounded Corners
- Ceiling Fan with Lights
- LED Lighting
- Dining Room Chandelier
- Bedroom Wall Light
- Clermont Interior Doors
- Pocket Doors
- Mirrored Closet Doors
- Entertainment Centre
- Bedroom Cabinets, Drawers & Armoires
- Electric Fireplace with Mantle
- Solar Tubes

Kitchen

- Natural Wood Cabinet Doors
- Black Sink
- Pull out Trash and Recycle Bins
- Built-in Dishwasher
- Combination Microwave/Rangehood

Bathroom

- Jetted Tub
- Three, Four or Five Foot Shower Stall

Utilities

- Stacking Washer & Dryer (*110 V*)
- Park Pack A/C

"And many more - see your SRI Retailer for details".

Authorized Retailer:



This is not a fully detailed specification. SRI Homes reserves the right to change specifications, designs, materials and suppliers without notice and without incurring obligation. Information contained herein is from data available at the time of printing. Square footage and dimensions are approximate. Furniture placement shown is for suggestion only. Photos and renderings may show optional features. Printed in Canada 5000/4/2017